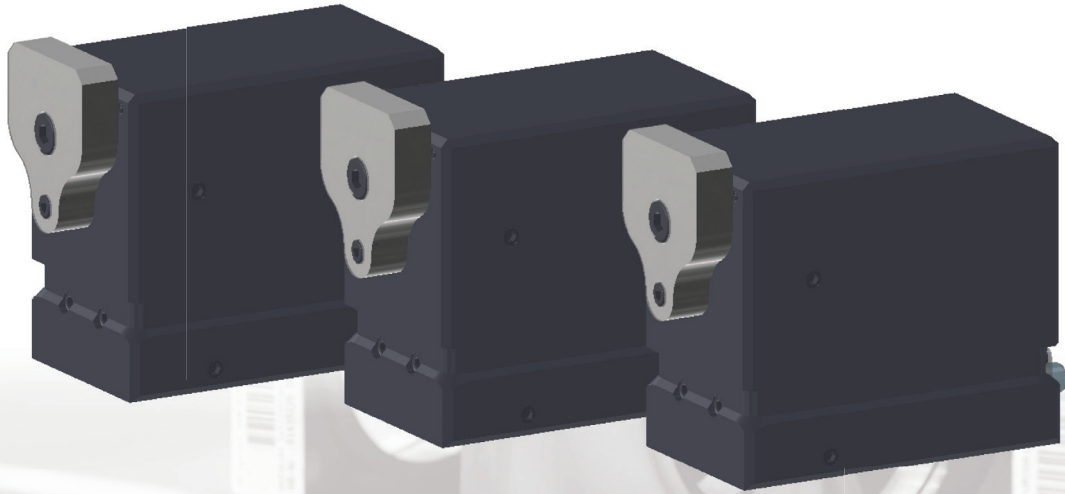


ASMEL-200 /400 /600

ELECTRICAL SEPARATORS

NEW



Stops, separates and damps one or more accumulated pallet holders at a defined pallet holder stop plate or at the working piece directly.

- + ASMEL-200: Pallet holder loads up to 200 kg
ASMEL-400: Pallet holder loads up to 400 kg
ASMEL-600: Pallet holder loads up to 600 kg
- + Optimal release of the workpiece pallets
- + Integrated sensor system for detecting the upper and lower position of the stopping plate
- + Diagnostic function about LED
- + Error output
- + Maintenance-free
- + Connection: 1x8-pole M12x1 plug or 2x5-pole M12x1 plug
- + Dust and clamping protection
- + Extremely compact design

Represented by Lean Factory America
Contact: Greg Fisher | Mobile: +1-574-400-9954
greg.fisher@leanfactoryamerica.com | www.leanfactoryamerica.com