

Product Portfolio

K.HARTWALL
Logistics Efficiency through Innovation



Represented by:

Lean Factory America, LLC
816 E. 3rd Street
Buchanan, MI 49107

Tel: 1-888-674-2839
www.leanfactoryamerica.com



Decrease
handling costs



Reduce
inventory



Forklift-free
environment

A large green circular graphic containing a stylized illustration of a person operating a forklift moving a pallet of boxes. The text 'LEAN LOGISTICS' is overlaid in large white letters.

LEAN LOGISTICS

Index

Lean Dolly Type I	6
Lean Dolly Type II.....	7
Lean Dolly Type V	8
Lean Dolly Type VII.....	9
Lean Dolly Type VIIC with elevated deck	10
Lean Dolly 600 x 800 mm.....	11
Lean Adaptor Pallet	12
Mini Lean Pallet Size Dolly	14
Lean Pallet Size Dolly.....	15
Lean Pallet Size Dolly with Elevated Deck	16
Lean Shelf Wagon	17
Lean Taxi Wagon	18
Lean Taxiliner.....	19
LiftLiner	20
elephantBoard® and Daughter Cart for the LiftLiner	21
Accessories – Wheel overview	22
Accessories – Safety and ergonomics	23
Accessories – Dirt prevention.....	24
Accessories – Connecting device	25
VisiMore® Asset Management	27
Our Customers.....	28

Keep things rolling with Lean Logistics



Benefits

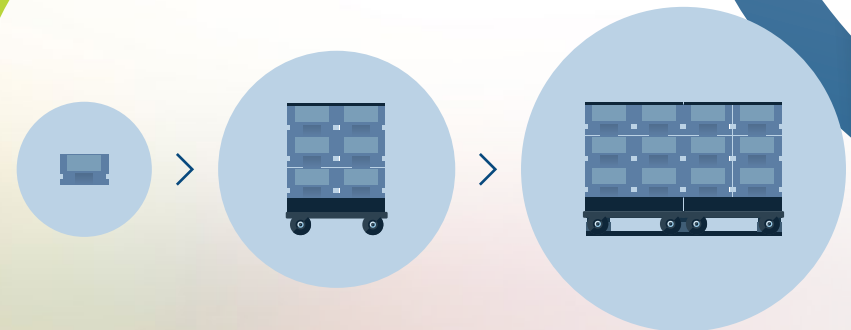
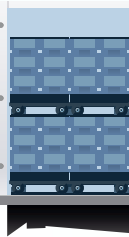
- Improve work flow
- Reduce handling costs
- Enable reduction of stock level
- Reduce need for floor space
- Improve ergonomics
- Fast and safe truck loading



Start by implementing Lean Logistics in-house...

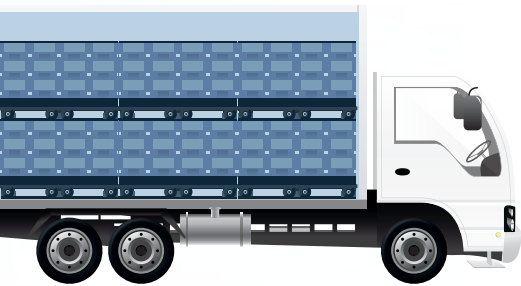
Whether you are an OEM or a sub-supplier, changing from pallets to wheels is the most important decision when deploying Lean Logistics.

Ensuring more efficient, forklift-free internal logistics can cut the costs of inventory, handling and in-house transportation. Increased efficiency also means space optimisation, shorter turnaround times and better health & safety for staff. Smooth in-house logistics will fully support Lean production principles.



Internal logistics

Move from pallets to wheels to increase efficiency in internal logistics.



External logistics

Choose a solution that allows for effortless transfer from wheels to pallets and from pallets to wheels.



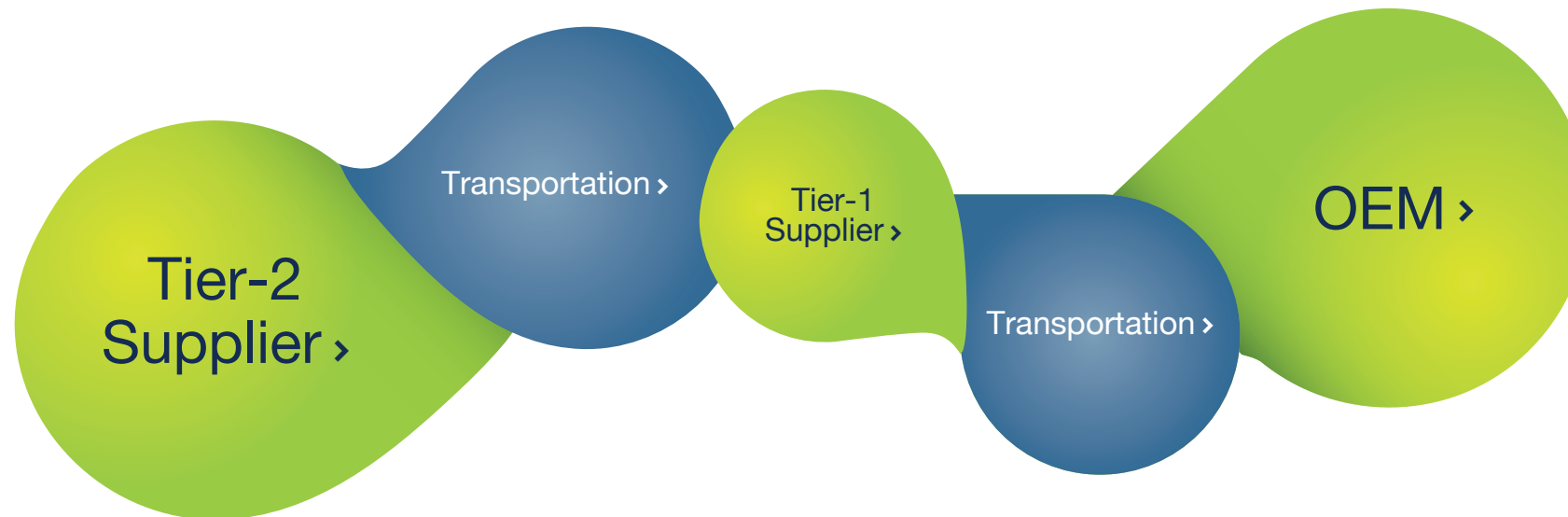
...and then take Lean Logistics onto the road



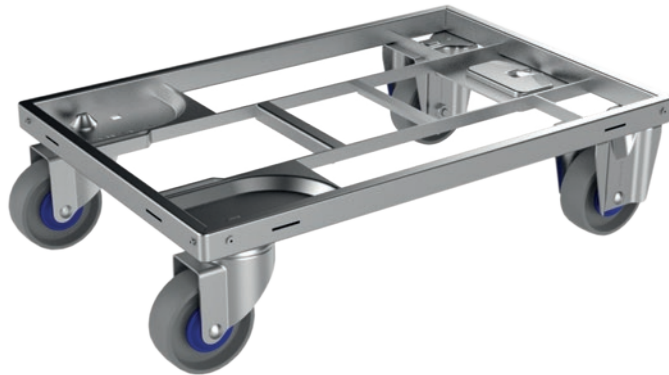
Standardized integrated transport systems improve delivery efficiency and precision, creating an optimised supply chain.

Choosing the K.Hartwall Lean Solution for in-house logistics lets you expand with wheeled logistics both upstream and downstream in your supply chain.

The Lean Adaptor Pallet enables swift and efficient loading, securing and unloading of wheeled units.



Lean Dolly Type I



TECHNICAL SPECIFICATION	
External dimensions	24" x 15" or 24" x 22.5"
Tare weight with CPD wheels, no corners	14.5 lbs
Wheel size	4" wheels
Wheel configuration	2 fixed & 2 swivel
Wheel material	CPD, rubber or PU
Working capacity	
- CPD – standard and ESD	550 lbs
- Rubber – standard and ESD	550 lbs
- PU – standard and ESD	550 lbs
Surface treatment	Blue zinc plated acc. to EN-ISO2081
Safe stacking	up to 15 units (77")
Compatibility with Lean Adaptor Pallets	- Next Generation (DOS1696 & DOS1725) - Type III (DOS1405)

OPTIONS

- Total brake on 1 or 2 swivel wheels
- RFID and Tracking compatibility
- Corner supports
- ESD compatibility

ALSO AVAILABLE IN ISO- AND EURO-DIMENSIONS

- 600 x 400 mm
- 600 x 500 mm

DESIGNED TO CARRY SLC'S AND TRAYS SIZED

- 24" x 22.5"
- 24" x 15"
- 12" x 15"

ACCESSORIES

- Ergonomic handle
- Strapping device
- Oil dripping pan

Lean Dolly Type II



TECHNICAL SPECIFICATION	
External dimensions	24" x 15" or 24" x 22.5"
Tare weight with CPD wheels, no corners	15.5 lbs
Wheel size	4" wheels
Wheel configuration	4 swivel
Wheel material	CPD, rubber or PU
Working capacity:	
- CPD – standard and ESD	550 lbs
- Rubber – standard and ESD	550 lbs
- PU – standard and ESD	550 lbs
Surface treatment	Blue zinc plated acc. to EN-ISO2081
Safe stacking	up to 15 units (77")
Compatibility with Lean Adaptor Pallets	- Next Generation (DOS1696 & DOS1725) - Type III (DOS1405)

OPTIONS

- Total brake on 1 or 2 swivel wheels
- RFID and Tracking compatibility
- Corner supports
- ESD compatibility

ALSO AVAILABLE IN ISO- AND EURO-DIMENSIONS

- 600 x 400 mm
- 600 x 500 mm

DESIGNED TO CARRY SLC'S AND TRAYS SIZED

- 24" x 22.5"
- 24" x 15"
- 12" x 15"

ACCESSORIES

- Ergonomic handle
- Strapping device
- Oil dripping pan

Lean Dolly Type V

K.HARTWALL
Logistics Efficiency through Innovation



TECHNICAL SPECIFICATION	
External dimensions	24" x 15" or 24" x 22.5"
Tare weight with CPD wheels, with corners	16.5 lbs
Wheel size	4" wheels
Wheel configuration	4 swivel
Wheel material	CPD, rubber or PU
Working capacity:	
- CPD – standard and ESD	550 lbs
- Rubber– standard and ESD	550 lbs
- PU – standard and ESD	550 lbs
Surface treatment	Blue zinc plated acc. to EN-ISO2081
Safe stacking	up to 15 units (77")
Compatibility with Lean Adaptor Pallets	- Next Generation (DOS1696 & DOS1725) - Type III (DOS1405)

OPTIONS

- Total brake on 1 or 2 swivel wheels
- RFID & Tracking compatibility
- ESD compatibility

ALSO AVAILABLE IN ISO- AND EURO-DIMENSIONS

- 600 x 400 mm
- 600 x 500 mm

DESIGNED TO CARRY SLC'S AND TRAYS SIZED

- 24" x 22.5"
- 24" x 15"
- 12" x 15"

ACCESSORIES

- Ergonomic handle
- Strapping device
- Oil dripping pan

Lean Dolly Type VII



With sliding draw bar system



TECHNICAL SPECIFICATION	
External dimensions	24" x 15" or 24" x 22.5"
Tare weight with CPD wheels, no corners	15.5 lbs
Wheel size	4" wheels
Wheel configuration	2 fixed & 2 swivel
Wheel material	CPD, rubber or PU
Working capacity:	
- CPD – standard and ESD	550 lbs
- Rubber – standard and ESD	550 lbs
- PU – standard and ESD	550 lbs
Working capacity in tugger train	2200 lbs
Max amount per tugger train	7–8 units
Surface treatment	Blue zinc plated acc. to EN-ISO2081
Safe stacking	up to 15 units (77")
Compatibility with Lean Adaptor Pallets	- Next Generation (DOS1696 & DOS1725) - Type III (DOS1405)
Recommended max speed	4 mph

OPTIONS

- Total brake on 1 or 2 swivel wheels
- RFID & Tracking compatibility
- Corner supports
- Stealth version sliding tow system
- ESD compatibility

ALSO AVAILABLE IN ISO AND EURO-DIMENSIONS

- 600 x 400 mm
- 600 x 500 mm

DESIGNED TO CARRY SLC'S AND TRAYS SIZED

- 24" x 22.5"
- 24" x 15"
- 12" x 15"

ACCESSORIES

- Ergonomic handle
- Strapping device
- Oil dripping pan

Lean Dolly Type VIIC with elevated deck



TECHNICAL SPECIFICATION	
External dimensions	24" x 15" or 24" x 22.5"
Tare weight with CPD wheels, no corners	39.5 lbs
Wheel size	4" wheels
Wheel configuration	2 fixed & 2 swivel
Wheel material	CPD, rubber or PU
Maximum Load Capacity:	
- CPD – standard and ESD	155 lbs
- Rubber – standard and ESD	155 lbs
- PU – standard and ESD	155 lbs
Working capacity in tugger train	2200 lbs
Max amount per tugger train	7–8 units
Surface treatment	Blue zinc plated acc. to EN-ISO2081
Safe stacking	up to 3 units (77")
Compatibility with Lean Adaptor Pallets	- Next Generation (DOS1696 & DOS1725) - Type III (DOS1405)
Recommended max speed	3 mph

OPTIONS

- Total brake on 1 or 2 swivel wheels
- RFID & Tracking compatibility
- ESD compatibility

ALSO AVAILABLE IN EURO-DIMENSIONS

- 600 x 400 mm

DESIGNED TO CARRY SLC'S AND TRAYS SIZED

- 24" x 22.5"
- 24" x 15"
- 12" x 15"

ACCESSORIES

- Ergonomic handle
- Oil dripping pan

Lean Dolly 600 x 800 mm



With 5 swivel wheels



With draw bar



TECHNICAL SPECIFICATION	
External dimensions	600 x 800 x 158 (495) mm
Tare weight with CPD wheels	26.5 lbs
Wheel size	4" wheels
Wheel configuration	2 fixed & 3 swivel or 5 swivel
Wheel material	CPD, rubber or PU
Working capacity:	
- CPD – standard and ESD	1100 lbs
- Rubber – standard and ESD	1100 lbs
- PU – standard and ESD	1100 lbs
Working capacity in tugger train	3530 lbs
Max amount per tugger train	5–6 units
Surface treatment	Blue zinc plated acc. to EN-ISO2081
Safe stacking	up to 15 units (77") with towing arm 91"
Compatibility with Lean Adaptor Pallets	- Next Generation (DOS1696 & DOS1725) - Type III (DOS1405)
Recommended max speed	4 mph

OPTIONS

- Total brake on 1 or 2 swivel wheels
- RFID & Tracking compatibility
- Corner supports
- Draw bar
- ESD compatibility

ALSO AVAILABLE IN ISO-DIMENSIONS

- 600 x 1000 mm

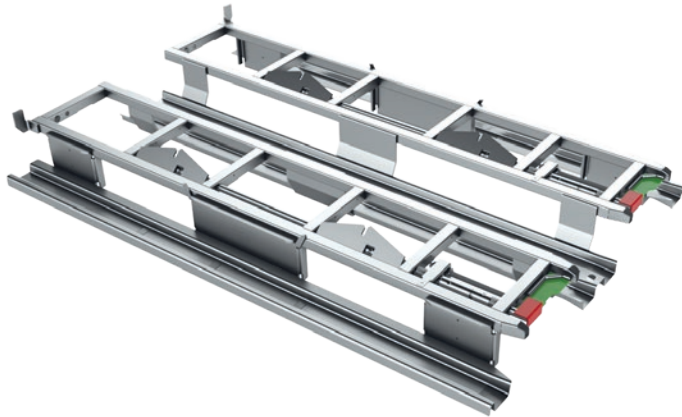
DESIGNED TO CARRY SLC'S AND TRAYS SIZED

- 24" x 22.5"
- 24" x 15"
- 12" x 15"

ACCESSORIES

- Strapping device
- Multipurpose plywood deck

Lean Adaptor Pallet



TECHNICAL SPECIFICATION	
External dimensions	48" x 30" or 48" x 45"
Tare weight	81.5 lbs
Working capacity	2200 lbs
Surface treatment	Blue zinc plated acc. to EN-ISO2081
Safe stacking	
- loaded in transport	2 units
- loaded at warehouse	3 units
- empty	15 units

OPTIONS

- Non-slip features
- RFID & Tracking compatibility
- ESD compatibility

ALSO AVAILABLE IN ISO AND EURO-DIMENSIONS

- 1200 x 1000 mm
- 1200 x 800 mm

ACCESSORIES

- EasyStrap
- Compatible with industry standard lids

DESIGNED FOR ALL STANDARD LEAN DOLLIES



REHA TWALL
Logistics Efficiency through Innovation



Mini Lean Pallet Size Dolly



TECHNICAL SPECIFICATION	
External dimensions	32" x 30"
Tare weight	121 lbs
Wheel size	6.5" wheels
Wheel configuration	2 fixed & 2 swivel or 4 swivel
Wheel material	PU and CPD
Working capacity	2200 lbs
Working capacity in tugger train	7500 lbs
Max amount per tugger train	6 units
Surface treatment	Blue zinc plated acc. to EN-ISO2081
Safe stacking	up to 6 units (66") with draw bar (94")
Recommended max speed	4 mph

OPTIONS

- Available with anti slip material or plywood deck
- Integrated strapping device
- ESD compatibility
- Total brake on 1 or 2 swivel wheels
- RFID & Tracking compatibility
- Corner supports
- Catch for towing one or two lines of Lean dollies
- Wheel spacer

ALSO AVAILABLE IN EURO-DIMENSIONS

- 923 x 600 mm x 280 (1020) mm

DESIGNED TO CARRY SLC'S, PALLETS AND BOXES

- Pallet sizes:
32" x 30" or 800 x 600 mm
- Cages and foldable boxes

COMPATIBLE WITH ALL LEAN DOLLIES, LEAN SHELF WAGON, TAXI WAGON AND TAXILINER.

Lean Pallet Size Dolly



With 6 wheels
for 360° spinning



TECHNICAL SPECIFICATION	
External dimensions	48" x 45" or 32" x 30"
Tare weight	170 or 117 lbs
Wheel size	6.5" wheels
Wheel configuration	2 fixed & 2 swivel 4 swivel 2 fixed & 4 swivel
Wheel material	PU and CPD
Working capacity	2200 lbs
Working capacity in tugger train	7500 lbs
Max amount per tugger train	6 units
Surface treatment	Blue zinc plated acc. to EN-ISO2081
Safe stacking	up to 6 units (66") with "draw bar" (94")
Recommended max speed	4 mph

COMPATIBLE WITH ALL LEAN DOLLIES, LEAN SHELF WAGON, TAXI WAGON AND TAXILINER.

OPTIONS

- Available with anti slip material or plywood deck
- Integrated strapping device
- ESD compatibility
- Total brake on 1 or 2 swivel wheels
- RFID & Tracking compatibility
- Corner supports
- 360° spinning on 6 wheels
- Catch for towing one or two lines of Lean dollies
- Wheel spacer
- Forklift guide

ALSO AVAILABLE IN ISO- AND EURO-DIMENSIONS

- 1200 x 800 mm
- 1200 x 1000 mm

DESIGNED TO CARRY SLC'S, PALLETS AND BOXES

- Pallet sizes: Euro, ISO & 48" x 45"
- SLC's in Euro, ISO or US boxes
- Cages and foldable boxes

Lean Pallet Size Dolly with elevated deck



TECHNICAL SPECIFICATION	
External dimensions	47" x 31" x 24"
Tare weight	196 lbs
Wheel size	6.5" wheels
Wheel configuration	2 fixed & 2 swivel 4 swivel 2 fixed & 4 swivel
Wheel material	PU and PA
Working capacity	2200 lbs
Working capacity in tugger train	8800 lbs
Max amount per tugger train	6 units
Surface treatment	Blue zinc plated acc. to EN-ISO2081
Safe stacking	up to 66" with "handlag" (94")
Recommended max speed	4 mph

COMPATIBLE WITH ALL LEAN DOLLIES, LEAN SHELF WAGON, TAXI WAGON AND TAXILINER.

OPTIONS

- Available with anti slip material or plywood deck
- Integrated strapping device
- ESD compatibility
- Total brake on 1 or 2 swivel wheels
- RFID & Tracking compatibility
- Corner supports
- 360° spinning on 6 wheels
- Catch for towing one or two lines of Lean dollies
- Wheel spacer
- Forklift guide

ALSO AVAILABLE IN ISO- AND EURO-DIMENSIONS

- 1200 x 800 x 600 mm
- 1200 x 1000 mm (97 kg)
- 48" x 45" (90 kg)

DESIGNED TO CARRY SLC'S, PALLETS AND BOXES

- Pallet sizes: Euro, ISO & 48" x 45"
- SLC's in Euro, ISO or US boxes
- Cages and foldable boxes

Lean Shelf Wagon



TECHNICAL SPECIFICATION

External dimensions	50" x 32" x 66"
Tare weight (2 shelves + floor)	250 lbs
Wheel size	6.5" wheels
Wheel configuration	2 fixed and 2 swivel
Wheel material	PU and CPD
Surface treatment	Blue zinc plated acc. to EN-ISO2081
Working capacity	Per Shelf: 330 or 550 lbs (heavy-duty) Per Unit: 990 or 1765 lbs (heavy-duty)
Max amount in tugger trains	6 units
Recommended max speed	4 mph

COMPATIBLE WITH ALL LEAN DOLLIES, LEAN SHELF WAGON, TAXI WAGON AND TAXILINER.

OPTIONS

- ESD compatibility
- Total brake on 1 or 2 swivel wheels
- RFID & Tracking compatibility
- 6 wheel option for 360° spinning
- Catch for towing one or two lines of Lean dollies
- Wheel spacer
- Forklift guide

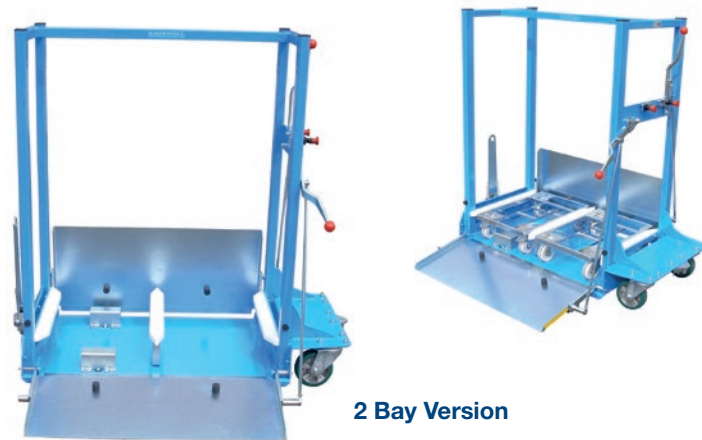
DESIGNED TO CARRY SLC'S AND TRAYS AND OTHER BOXES

ACCESSORIES

- Transport & non-contamination cover

Lean Taxi Wagon

K.HARTWALL
Logistics Efficiency through Innovation



2 Bay Version



3 Bay Version



TECHNICAL SPECIFICATION	2 Bay Version	3 Bay Version
External dimensions	57" x 56" x 28.5"	75" x 56" x 28.5"
Length including the draw bar	72"	90"
Space between dividers	16"	16"
Working capacity	1100 lbs	1650 lbs
Tare weight	324 lbs	386 lbs
Maximum towing load	4960 lbs	4960 lbs
Maximum speed	4 mph	4 mph
Min. turning circle	141"	60"
Ramp elevation for Dollies	2.8"	2.8"
Ground clearance	1.5"	1.5"
Steering system	Reverse draw bar	Reverse draw bar
Surface treatment	Powder coating	Powder coating

COMPATIBLE WITH ALL LEAN PALLET SIZE DOLLY AND LEAN SHELF WAGON.

DESIGNED TO CARRY

- 600 x 400 mm Dollies
- Also ISO and US sized Dollies

BENEFITS

- Ideal for logistic flows where the sequence cannot be controlled
- Reduce handling costs
- Enables the delivery of multiple article numbers in one delivery sequence
- Improve ergonomics
- Fast and safe internal transport
- Excellent tracking and steering stability

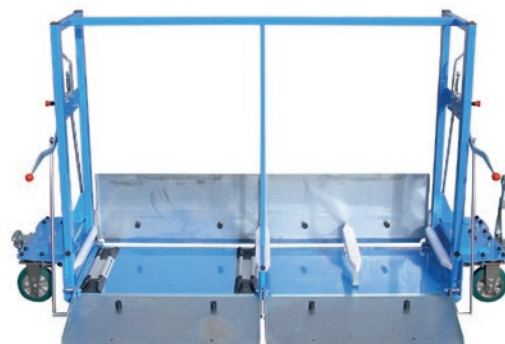
OPTIONS

- Non-slip feature for the ramps
- Double locking device
- Additional floor guidance
- ESD compatibility
- RFID & Tracking compatibility
- 600 x 800 Lean Dollies compatibility

Lean Taxiliner



3 Bay Version



4 Bay Version



TECHNICAL SPECIFICATION	3 Bay Version	4 Bay version
External dimensions	80" x 56" x 28.5"	98" x 56" x 28.5"
Length including the draw bar	100"	118"
Space between dividers	16"	16"
Working capacity	1650"	1650"
Tare weight	474 lbs	622 lbs
Maximum towing load	4960 lbs	4960 lbs
Maximum speed	9 mph	7.5 mph
Min. turning circle	150"	171"
Ramp elevation for Dollies	2.8"	3"
Ground clearance	1.5"	1.5"
Steering system SpurTrak™	All wheel Steer	All wheel Steer
Surface treatment	Powder coating	Powder coating

COMPATIBLE WITH ALL LEAN PALLET SIZE DOLLY AND LEAN SHELF WAGON.

DESIGNED TO CARRY

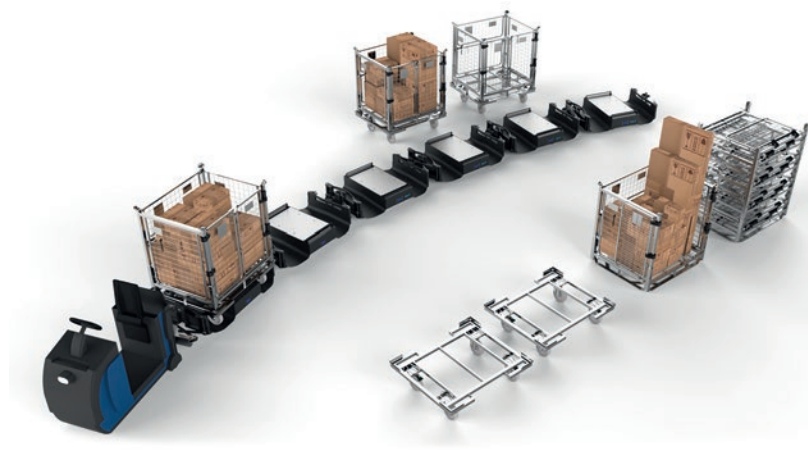
- 600 x 400 mm Dollies
- Also ISO and US sized Dollies

BENEFITS

- Ideal for logistic flows where the sequence cannot be controlled
- Reduce handling costs
- Enables the delivery of multiple article numbers in one delivery sequence
- Improve ergonomics
- Fast and safe internal transport
- Excellent tracking and steering stability

OPTIONS

- Non-slip feature for the ramps
- Double locking device
- Additional floor guidance
- ESD compatibility
- RFID & Tracking compatibility
- 600 x 800 mm Dollies compatibility



LIFTLINER

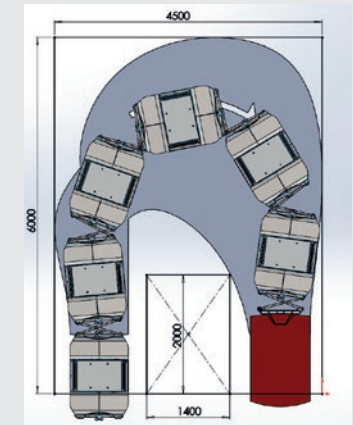
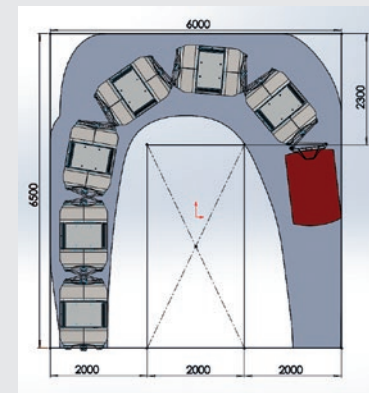
TECHNICAL SPECIFICATION

For daughter carts sized	32" x 24", height when down/up 11.5/14" 48" x 32", height when down/up 11.5/14" 48" x 40", height when down/up 11.5/14"
Ground clearance when down/up	0/24"
Wheel size	8" wheels
Wheel configuration	2 per wagon
Wheel material	PU
Maximum Load Capacity per mother cart	2200 lbs
Tare weight per mother cart	approx. 400 lbs
Coupling:	
- Length	8"
- Type	A&A crossbar coupling system
Maximum speed (depends on number of LiftLiners)	10 mph
Surface treatment	Powder coating
Time to lift	Less than 3 seconds

Each LiftLiner contains 2 mother carts.

BENEFITS

- Easy one man operation
- No turnaround needed
- Extremely manoeuvrable
- No additional routing needed
- Safe and high track stability
- Loading/unloading from both sides



elephantBoard® and Daughter Cart for the LiftLiner

K.HARTWALL
Logistics Efficiency through Innovation



TECHNICAL SPECIFICATION ELEPHANTBOARD (4 SHELVES)	
External dimensions	32" x 57" x 71"
Maximum working capacity	1100–2200 lbs
Shelf material	Rotomoulding plastic
Number of shelves	1–4
Distance between shelves	14"
Tare weight	143 lbs
Wheel type	2 swivel and 2 fixed
Wheel material	Heavy-duty polyurethane wheels
Wheel size	8"
Surface treatment	Blue Zinc Plated
Amount per LiftLiner	2 units

TECHNICAL SPECIFICATION DAUGHTER CART	
External dimensions	48" x 40" or 48" x 45"
Maximum working capacity	2200 lbs
Tare weight	641 lbs
Wheel type	2 fixed and 2 swivel or 4 swivel
Wheel material	Polyamide
Wheel size	8"
Surface treatment	Blue zinc plated
Amount per LiftLiner	2 units

Also available in ISO size.

OPTIONS

- Eliminate the need for forklifts and reduce the risk of accidents at manufacturing and assembly lines
- Lower maintenance costs
- Reduce overall operator costs
- Require only one operator making multiple deliveries on one route trip
- Enable to carry smaller and kitted loads in addition to pallet units in the same train
- Faster delivery rates - takes seconds to unload

Accessories – Wheel overview

Ø 4" WHEELS



CPD WHEEL



RUBBER WHEEL



POLYURETHANE WHEEL



ESD RUBBER WHEEL



**ESD HYBRID WHEEL
NON-MARKING**



**ESD POLYURETHANE
WHEEL**

Ø 6.5" WHEELS



POLYURETHANE WHEEL



SOLID WHEEL PA

- All our wheels are equipped with ball bearings to ensure
 - lower rolling resistance
 - lower noise
 - long life span
- Very high load capacity and quality
- The wheels are designed to be used also in a tugger train



CLEAN WHEEL





**MULTIPURPOSE DECK
FOR 600 X 800 MM LEAN DOLLIES**

TECHNICAL SPECIFICATION

External dimensions	23.5" x 31.5"
Material	Coated plywood
Max. load	1100 lbs
Supplied	Ready to use

DESIGN

- Compatible with 600 x 800 Lean Dollies

BENEFITS

- Provides a close deck for smaller packages
- Easy to use
- Equipped with two ergonomic handles



**ERGONOMIC HANDLE
FOR TOWING OF DOLLIES**

TECHNICAL SPECIFICATION

External dimensions	18.5" (L) x 16" (W) x 35.5" (H)
Surface treatment	Blue zinc plating
Weight	11 lbs
Wheel type and size	CPD 4"
Supplied	Ready to use

DESIGN

- Both for 600 x 400 and 600 x 800 Lean Dollies

BENEFITS

- Ergonomic and safe way to move the dollies



**EASY STRAP
FOR LEAN ADAPTOR PALLET**

TECHNICAL SPECIFICATION	
Modular length	90" – 150"
Material	Textile with metal hook
Max. load to be tripped	2200 lbs = max. load to be distributed on one or more Adaptor Pallets
Max. load by stacking	2200 lbs
Supplied	Ready to use and to be attached to the Adaptor Pallet.

To be used in connection with the Lean Adaptor Pallet and secure the transported boxes.

DESIGN

- Adjustable length
- Directly attached to the Lean Adaptor Pallet

BENEFITS

- Safer transportation
- Easy to attach
- Reusable



**COVER
FOR LEAN SHELF WAGON**

TECHNICAL SPECIFICATION	
External dimensions	32" x 49.5" x 66"
Material	PVC (polyvinyl chloride)
Packing	Delivered as complete kit for 1 unit
Supplied	Delivered ready for use and to be attached to the Adaptor Pallet

Designed for closed transportation of the Lean Shelf Wagon between warehouses or from for example unloading areas outside to inside. The cover is very easy to flip over and open as well as closing.

DESIGN

- Access from both long and short sides if needed
- Easy manual handling due to Velcro-closing
- Flip-up and attach sides for less space consuming handling

BENEFITS

- Weather protection
- Protection against contamination
- Transport safety under truck transportation
- Internal transport safety
- Easy manual handling
- Space friendly solution

Accessories – Connecting device



**DRIPPING PAN
FOR 600 X 400MM LEAN DOLLIES**

TECHNICAL SPECIFICATION

External dimensions	24" x 16"
Material	PVC (Polyvinyl chloride)
Supplied	Ready to use

Designed to be placed between the Dolly and the packages transported.

BENEFITS

- Prevents liquid dripping from boxes on the floor
- Prevents accidents
- The solution stays stackable while being attached with the dripping pan



**TOW TRACTOR
DRAW BAR**

TECHNICAL SPECIFICATION

Max. load on the draw bar	13 230 lbs
Max. load on the pin	4400 lbs
Compatible with Lean Dollies sized	24" x 15" 24" x 22.5" 32" x 30" 48" x 45"
Surface treatment	Blue zinc plated
Supplied	Assembled ready to mount on the tugger

DESIGN

For the tractor types:
Jungheinrich EZS350 and Linde P30/P50.
It can also be adjusted for other tractor types.

BENEFITS

- Enable towing of all Lean Dollies in various combinations.

We improve our customers logistics efficiency

Innovative solutions and services for over 80 years

K.Hartwall was founded in Söderkulla, Finland in 1932. Over the years we have acquired in-depth knowledge of logistical processes and of their financial and environmental impacts.

Today we bring logistical efficiency by delivering innovative solutions, including returnable load carriers and associated services.

Modernizing goods delivery and merchandising

K.Hartwall works closely with customers around the world to realise measurable benefits through improved logistical flows.

Our efficient global delivery capability has made K.Hartwall the partner of choice for several companies in the retail, dairy, beverage, logistics and Lean manufacturing sectors.





GAIN MORE VISIBILITY OF YOUR ASSETS

Save costs with Visimore® Asset Management System. Know exactly how many units are in use and where they are. Manage your assets and make every of them work for you!

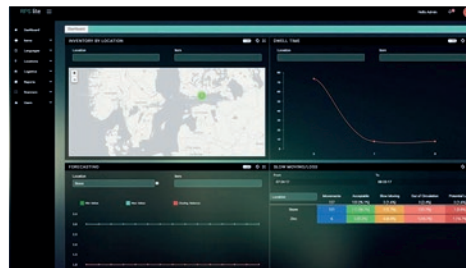
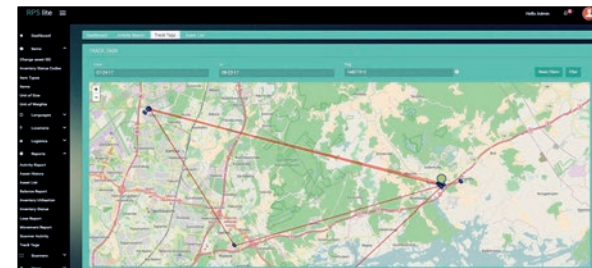
Visimore® is a complete solution including monitoring and analytics, data management and sensor technology.



- track
- analyse
- forecast

EASY-TO-INSTALL SENSORS AND CLOUD-BASED DATA

Visimore® is a truly new way to proactively manage the assets in your supply chain. It provides KPI's that ensure optimal usage of your load carriers to drive performance improvements. This industry specific solution has been designed to be configurable to address your business requirements with the least amount of disruption to your current operations. It will provide high definition visibility to your assets while simultaneously collecting valuable supply chain information.



OPTIONS

- Secure operations by minimising asset out of stock
- Optimise your fleet size
- Increase utilisation rate
- Minimise asset losses
- Increase quality of historical data on assets

HOW IT WORKS

- Visimore® tags are added to your assets
- DC network is easy to set up in a matter of hours.
- Assets are tracked both inside your DC with the network and outside by using a mobile application.
- This high quality and timely data is translated into meaningful business intelligence helping you managing your assets.

THINK ABOUT THE TOTAL COST



COST SAVINGS
UP TO 40 %

PRODUCTIVITY
INCREASED BY
UP TO 55%

3-4 TIMES LESS
MANUAL HANDLING
OPERATIONS
PER TOTE

BETTER
SAFETY AND
ERGONOMICS



DAIMLER
MAHLE



BOSCH
SCHAEFFLER



brose
Technik für Automobile

Continental 

K.HARTWALL
Logistics Efficiency through Innovation



Represented by:

Lean Factory America, LLC
816 E. 3rd Street
Buchanan, MI 49107

Tel: 1-888-674-2839
www.leanfactoryamerica.com